



S3 10 E

Scissor Lift
Lifting Capacity: 3000 Kg

twinbusch.de



Installation Operation and Maintenance Manual



Please read the entire manual before installation and operation

Twin Busch GmbH | Amperestraße 1 | D-64625 Bensheim
Tel.: +49 (0) 6251-70585-0 | Fax: +49 (0) 6251-70585-29 | info@twinbusch.de



INDEX

1. Important safety instructions.....	4~7
1.1 Important notices	
1.2 Qualified personnel	
1.3 Safety notices	
1.4 Warning signs	
1.5 Sound level	
1.6 Training	
2. Overview of the lift.....	8
2.1 General descriptions	
2.2 Technical data	
2.3 Construction of the lift	
3. Installation instructions.....	9~10
3.1 Preparations before installation	
3.1.1 Tools and equipments needed	
3.1.2 A list for parts checking	
3.1.3 Ground conditions	
3.2 Precautions for installation	
3.3 Installation	
3.4 Items to be checked after installation	
4. Operation instructions.....	10~12
4.1 Precautions	
4.2 Descriptions of control box	
4.3 Flow chart for operation	
4.4 Operating instructions	
4.5 Emergency lowering in case of no power	
5. Trouble shooting.....	13
6. Maintenance.....	14
7. Annex.....	16~30
Annex1, Packing list of the whole lift	
Annex2, Overall diagram	
Annex3, Hydraulic working system	
Annex4, Diagram for pneumatic system.	
Annex5, Wiring diagram	
Annex6, Separate diagrams for the lift	
Annex7. Spare parts list	
Annex8, Size and weight requirements on vehicles	

User's Records

Fill the following blanks with the information on the nameplate.

Model No. : _____

Serial No. : _____

Production Date: _____

The following specially trained people are permitted to operate and maintain this lift.

- 1.
- 2.
- 3.
- 4.
- 5.
- 6.
- 7.
- 8.
- 9.
- 10.

Installation Records

Model No. : _____

Serial No. : _____

Customer's Name: _____

Installation Date: _____

Declaration

The above mentioned lift has been correctly installed and all its functions including the function of safety devices have passed strict tests. Therefore we hereby declare that this lift is in normal working condition when installation finished.

Installation date

Installer's signature

User's signature

1. IMPORTANT SAFETY INSTRUCTIONS



1.1 Important notices

We will offer one-year's quality warranty for the whole machine, during which any quality problem will be dealt with to the user's satisfaction. However, we will not take any responsibility for misuse or improper installation and operation, overload running or inefficient ground condition.

This middle rise scissor lift is designed for tire service or other quick service around vehicles. Users must always bear in mind that this S3-10 lift is specially designed for lifting cars or other vehicles, and not to be used for any other purposes. Otherwise, we, as well as our sales agency, will not bear any responsibility for accidents or damages of the lift.

Make sure to pay careful attention to the warning label of the lifting capacity attached on the lift and never try to lift vehicles above this weight.

Read this manual carefully before operating the machine so as to avoid economic loss or personnel casualty incurred by wrong operation.

Without our professional advice, users are not permitted to make any modification to the control unit or mechanical unit.

1.2 Qualified personnel

1.2.1 Only qualified trained staff are allowed operate the lift.

1.2.2 Electrical connection must be done by a competent electrician.

1.2.3 No unauthorized personnel in the lifting area.

1.3 Danger notices

1.3.1 Do not install the lift on asphalt or a soft surface.

1.3.2 Read and understand all safety warnings before operating the lift.

1.3.3 Do not leave the controls while the lift is still in motion.

1.3.4 Keep hands and feet away from any moving parts. Keep feet clear of the lift when lowering.

1.3.5 Do not climb on the lift.

1.3.6 Do not wear unfit clothes, which could be caught by moving parts of the lift.

1.3.7 To prevent evitable incidents, surrounding areas of the lift must be free of obstructions.

1.3.8 The lift is designed to lift the entire body of vehicles, with its maximum weight within the lifting capacity.

1.3.9 Always insure the safety locks are engaged before any attempt to work near or under the vehicle. Never remove safety related components from the lift. Do not use if safety related components are damaged or missing.

1.3.10 Do not rock the vehicle while on the lift or remove any heavy component from vehicle that may cause excessive weight shift.

1.3.11 Always check moving parts and the synchronization. Ensure regular maintenance and if anything abnormal occurs, stop using the lift immediately and contact our dealers for help.

1.3.12 Lower the lift to its lowest position and disconnect the power source when servicing.

1.3.13 Do not modify any parts of the lift without manufacturer's advice.

1.3.14 If the lift is going to be left unused for a long time, users are required to:

- a. Disconnect the power source;
- b. Empty the oil tank;
- c. Lubricate the moving parts with hydraulic oil.

Attention: For environment protection, please dispose the disused oil in a proper manor.

1.4 Warnings (Read and understand all safety warnings before operation)

All safety warning labels are clearly depicted on the lift to ensure that the operator is aware of and avoids the dangers of using the lift in an incorrect manner. The labels must be kept clean and they have to be replaced if detached or damaged.

1.5 Sound Level

The sound emitted from the lift should not exceed 75DB.

1.6 Training

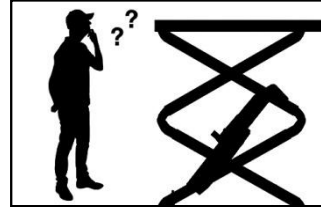
Only trained people are allowed to operate the lift. We are willing to provide professional training for the users when necessary.

Warning signs

All warnings should be clearly visible on the lift, to make sure that the user takes care using the machine. The warnings must be kept clean and be replaced if they are damaged or missing. Please read the signs carefully and memorize their importance for future operations a.



Read the manual before use



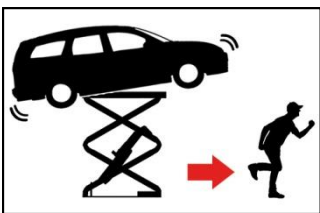
Only trained personnel should use the lift



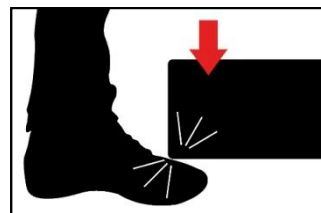
Repairs and service only through authorized personnel, never tamper with the safety devices



No unauthorized persons under the lift when in use



Always leave escape routes clear



Please take care not to trap your feet



Danger of crushing when letting down



Never use only one side of the lift



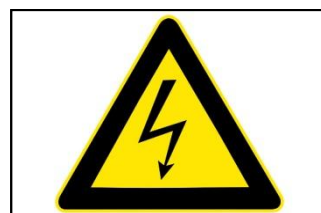
Avoid shaking



Vehicles should be evenly balanced



No obstacles under the lift



High voltage

2. Overview of the lift

2.1 General descriptions

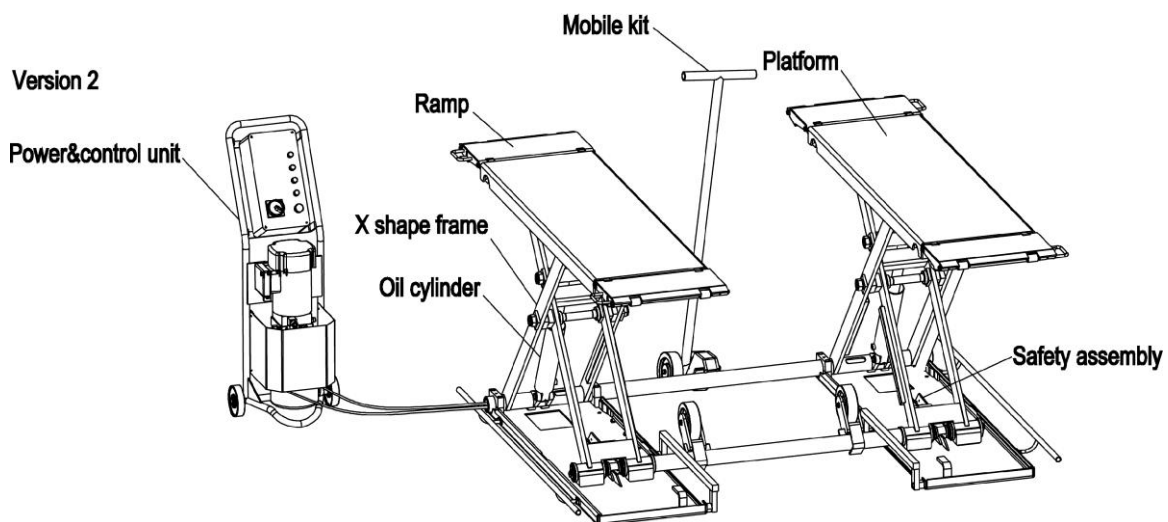
The lift is driven by an electro-hydraulic system. The gear pump delivers hydraulic oil to the cylinders and pushes their pistons to raise the platforms. For this model, there are two safety devices fitted: an anti-surge valve in the hydraulic system to prevent sudden drop down of the platform in case of oil hose breakage, the other is an active electromagnetic safety lock system.



2.2 Technical data

Model	Lifting capacity	Lifting time	Lifting height	Power supply
TW S3-10E	3000 kg	20S	1000mm	380V/400V / three phase

2.3 Construction of the lift



3. Installation instructions

3.1 Preparations before installation

3.1.1 Tools and equipment needed

- √ Electrical drill
- √ Open wrenches
- √ Screw drivers
- √ Adjustable spanners

3.1.2 Packing list

Unpack the package and check if any parts are missing. Do not hesitate to contact us in case any parts are missing, but if you do not contact us and insist on installing, Twinbusch as well as our dealers will not bear any responsibility for this and will charge for any parts subsequently demanded by the buyer.

3.1.3 Ground conditions

If the lift should be fixed, a smooth and solid concrete ground with more than 3000psi strength, and a tolerance of flatness less than 5mm with a minimum thickness of 200mm is needed. In addition, newly built concrete ground must undergo more than 28days' cure and reinforcement.

3.2 Precautions for installation

3.2.2 Make sure all hydraulic pipes are firmly connected in order to avoid leakage.

3.2.3 All bolts should be firmly tightened.

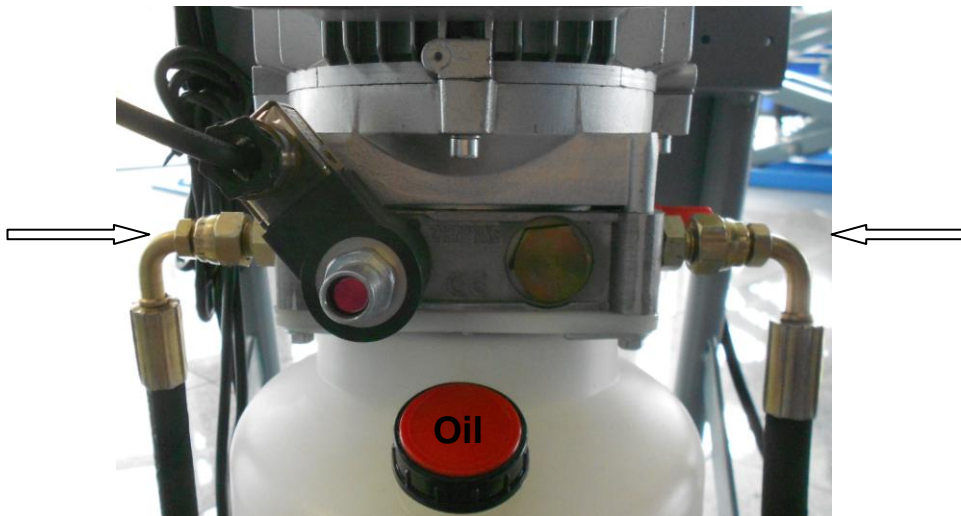
3.2.4 Never lift a vehicle for the first test!

3.3 Installation

Step 1: Remove the packaging and check that no parts are missing. Please read and understand this manual thoroughly before next step.

Step 2 : Connect the oil hoses to the pump assembly. (Make sure the hose connections are clean before mounting).

The hoses can be mounted in both directions!



Step3: Connect the wires of the limit switch to the wiring terminals in the control box. Make sure to connect NO.1 wire with NO.1 terminal, NO.2 wire with NO.2 terminal and so forth. Step4: Fill with hydraulic oil HLP 32 (5 liters)

Step 5: Fix the base frame. (Optional)

This TWS3-10E is designed as a portable lift. If necessary the lift can also be fixed to the floor.

Step 6: Trial testing with load. (Do not use a vehicle for trial testing)

Load applied shall not exceed 2500KG.

This step is of particular importance for it can check if the oil hose and air hose are well connected. Connections are good when there is no abnormal sound or leakage after having been tested for 2 or 3 times.

3.4 Items to be checked after installation

S/N	Check items	YES	NO
1	Are two platforms on the same level?		
2	Are oil hoses well connected?		
3	Are electrical connections correct?		
4	Do valves on the pump assembly leak?		



4. Operation instructions

4.1 Precautions

4.1.1 Always use the provided blocks for lifting. (Picture right)

4.1.2 Do not use the lift, if the safety devices are faulty.

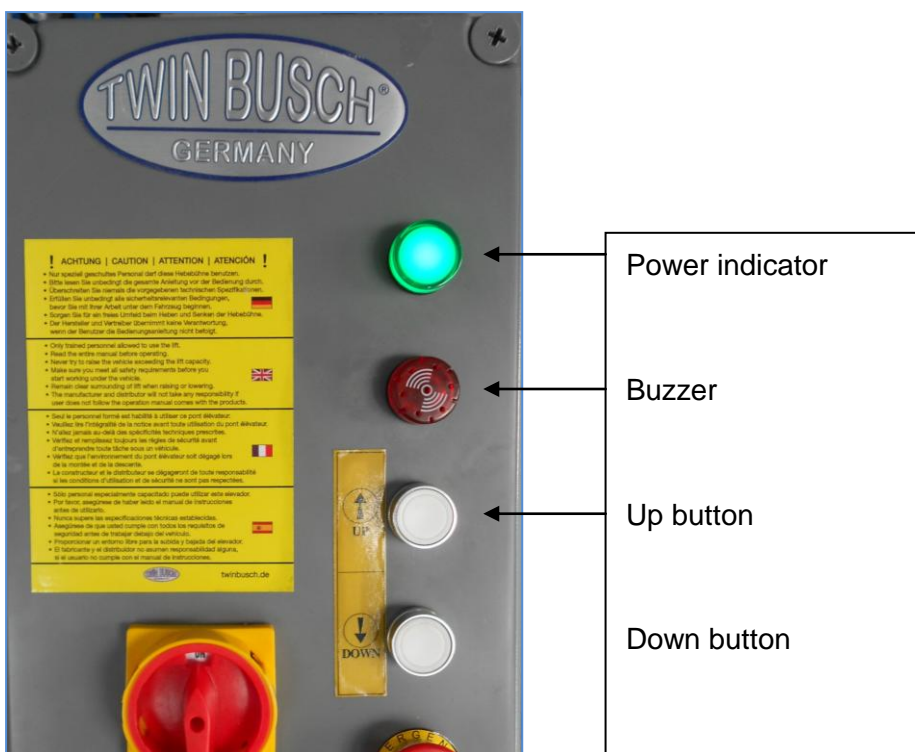
4.1.3 Do not attempt to lift vehicles which are unevenly positioned on the rising platforms, otherwise, Twinbusch as well as our dealers will not bear any responsibility for any consequence resulted thereby.

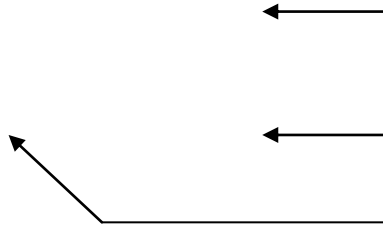
4.1.4 Operators and other personnel should stand in a safety area during lifting and lowering process.

4.1.5 When platforms are raised to the desired height, switch off the power to prevent any tampering while working with the lift.

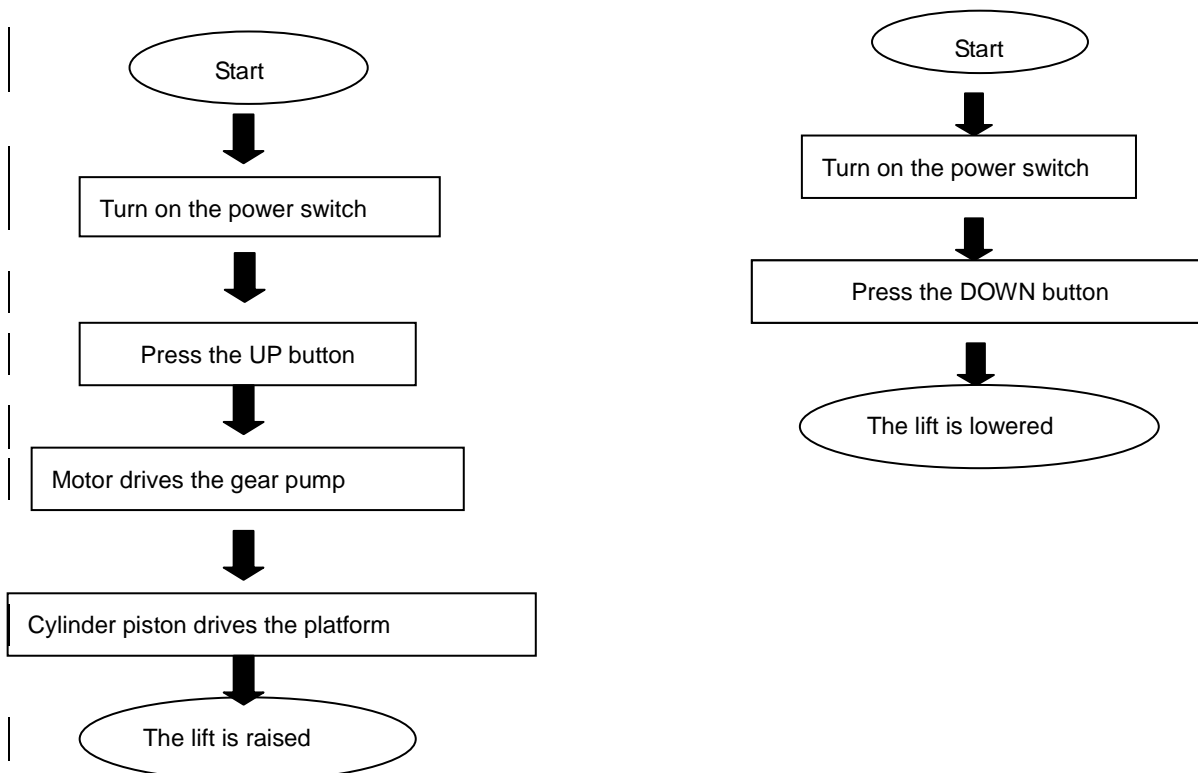
4.1.6. Make sure the safety lock of the lift is engaged before you start working under the vehicle and that no people are under the vehicle during lifting and lowering process.

4.2 Descriptions of control box





4.3 Flow chart for operation



4.4 Operation instructions

Raising the lift

1. Make sure that you have read and understood the operation manual before operation.
2. Drive and park the vehicle onto the lift.
3. Place the four rubber pads under the prop-points of the vehicle and ensure car is sitting on the rubber pads.
4. Press the UP button on the control box until rubber pads have touched the prop-points of vehicle. STOP and check the vehicle if all is secure
5. Press the UP button and lift the vehicle a bit higher check once again if the vehicle is in a safe position.
6. Having raised the vehicle to the required height, press the “Emergency stop” button before performing maintenance or repair work.

Lower the lift

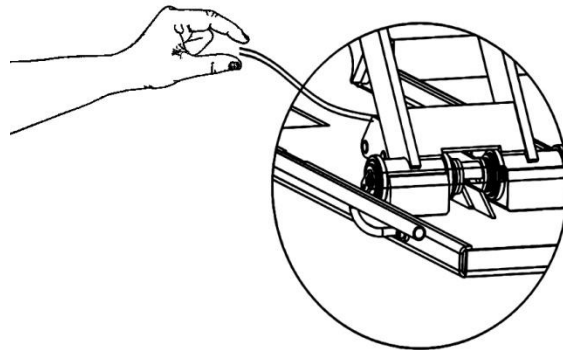
1. Switch on (power indicator is on).

2. Press the DOWN button to lower the lift.(the platforms of the lift will rise about 5cm to release the safety)
3. Drive the vehicle off the ramp.

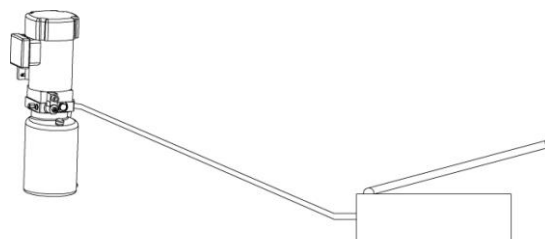
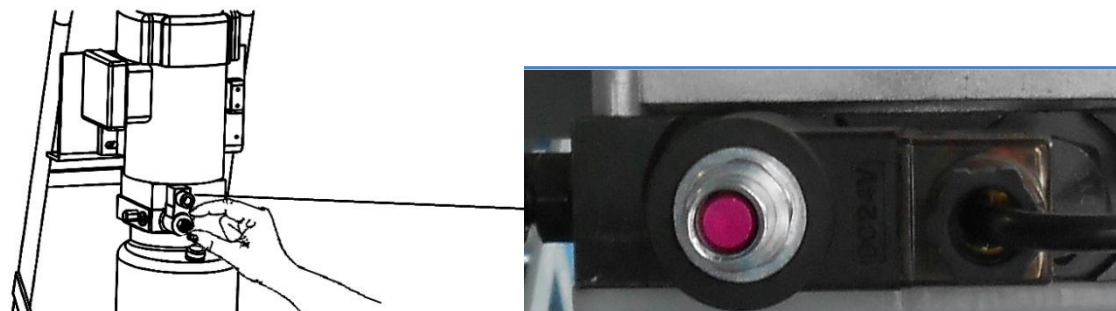
4.5 Emergency lowering in case power cut.

When the safety lock is not engaged:

- a. The safety lock must be manually disengaged on both sides.



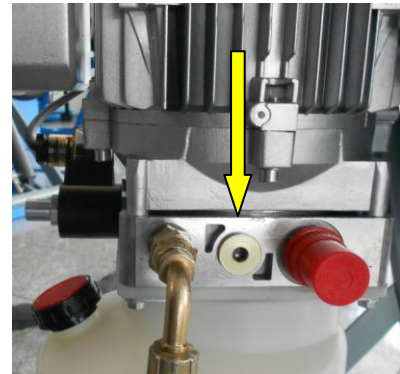
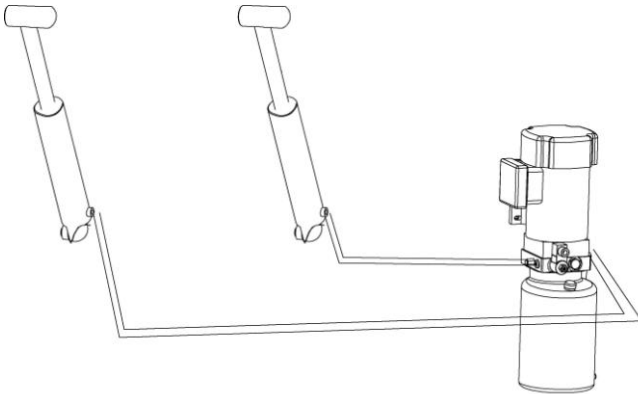
- b. Having released the safety mechanism, manually open the electro-magnetic valve on the pump assembly. This is done by removing the silver cap, then pressing the red valve and turning left.



If the safety lock is engaged:

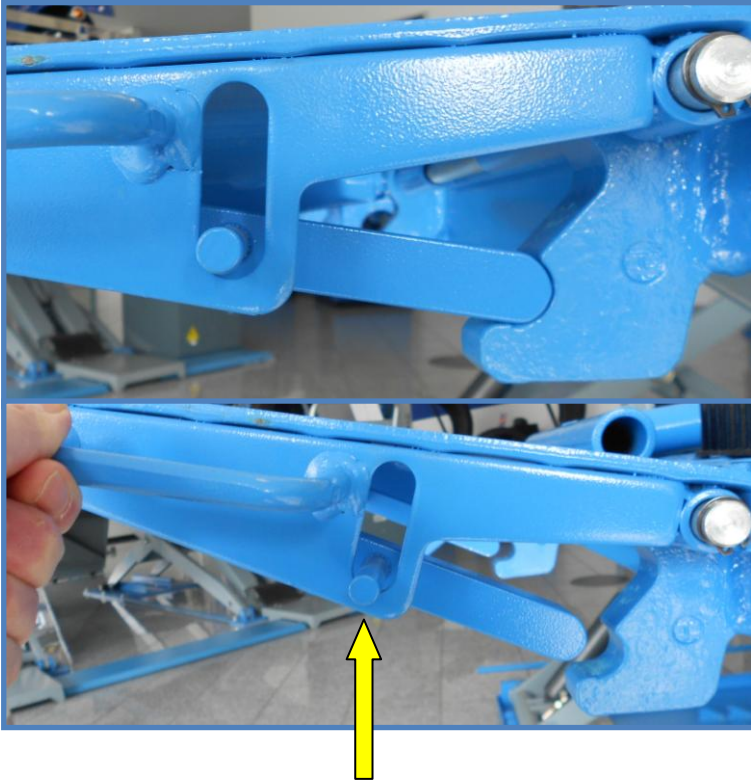
The lift has to be raised when the safety is engaged!

- a. If available an external pump can be connected to the block by removing the plug



- b. If no external pump is available the platforms have to be raised manually with a jack or fork lift to disengage the safety.
- c. Suspend the safety catch and open the red valve to enable the lowering.
- d. Release the centre of the electromagnet (press and turn left)

Ramps



The ramps can also be used as a lifting platform for longer vehicles, they are loadable with 3t
To release the platform, lift and press and hold the lever up.

Using the mobile kit



Insert the two wheels as shown in the picture when the lift is raised.
As the lift is lowered the wheels will press into the ground and raise the front of the lift.
When the lift is down, mount the clamp for the lever in the slot.
Insert the lever and push down to raise the whole lift.
Remember to remove the clamps after use!!

5. Trouble Shooting

ATTENTION: If you cannot solve the problem yourself, please do not hesitate to contact us for help .We will offer our service at the earliest time we can.

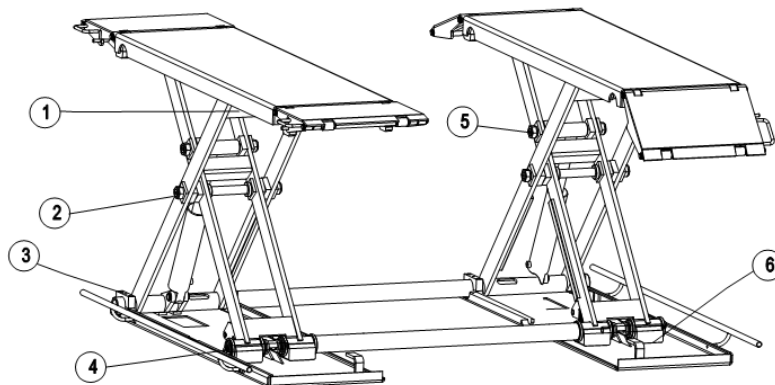
TROUBLES	CAUSE	SOLUTION
Motor does not run and will not raise	The wire connection is loose.	Check and make a good connection.
	The motor is damaged	Replace it.
	The limit switch is damaged or the wire connection is loose.	Connect it or adjust or replace the limit switch.
Motor runs but will not raise	The motor direction is wrong.	Check the wire connection.
	Overflow valve is loose or jammed.	Clean or adjust it.
	The gear pump is damaged.	Replace it.
	Oil level is too low.	Add oil.
	The oil hose is loose	Tighten it.
	The cushion valve became loose or jammed.	Clean or adjusts it.
Platforms go down slowly after being raised	The oil hose leaks.	Check or replace it.
	The oil cylinder is not sealed.	Replace the seal.
	The single valve leaks.	Clean or replace it.
	The overflow valve leaks.	Clean or replace it.
	Electrical unloading valve leaks.	Clean or replace it.
Raising too slow	The oil filter is jammed.	Clean or replace it.
	Oil level is too low.	Add oil.
	The overflow valve is not adjusted to the right position.	Adjust it.
	The hydraulic oil is too hot (above 45°).	Change the oil.
	The seal of the cylinder is damaged	Replace the seal.
Lowering too slow	The throttle valve jammed.	Clean or replace.
	The hydraulic oil is dirty.	Change the oil.
	The anti-surge valve jammed.	Clean it.
	The oil hose jammed.	Replace it.

6. Maintenance

Easy and low cost routine maintenance can ensure long life and safety. Here are the requirements for routine maintenance. You may choose the frequency of routine maintenance yourself depending on your lift's working conditions and time.

THE FOLLOWING PARTS NEED TO BE LUBRICATED

S/N	Description
1	Small idler wheel
2	Middle bush
3	U-shape block
4	Lower bush
5	Cylinder bush
6	Slider



6.1. Daily checks

Daily checking of the safety lock system is very important – the discovery of device failure before action could save your time and prevent you from great loss, injury or casualty.

- Check the oil hose connections and whether it leaks or not.
- Check the electrical system.
- Check if safety teeth and safety block are damaged.

6.2. Weekly checks

- Check the flexibility of moving parts.
- Check the working conditions safety parts.
- Check the amount of oil left in the oil tank. .
- Check the stud bolts for tightness.

6.3. Monthly checks

- Check the stud bolts for tightness.
- Check the tightness of the hydraulic system.

6.4. Yearly checks

- Empty the oil tank, clean and replace
- Replace the oil filter.

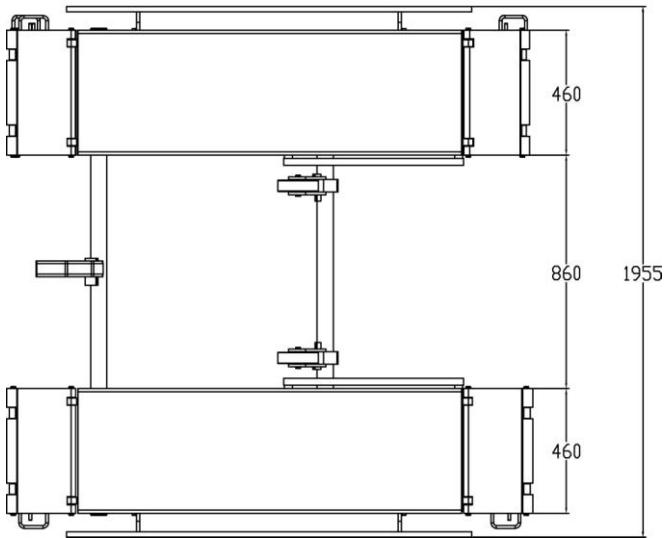
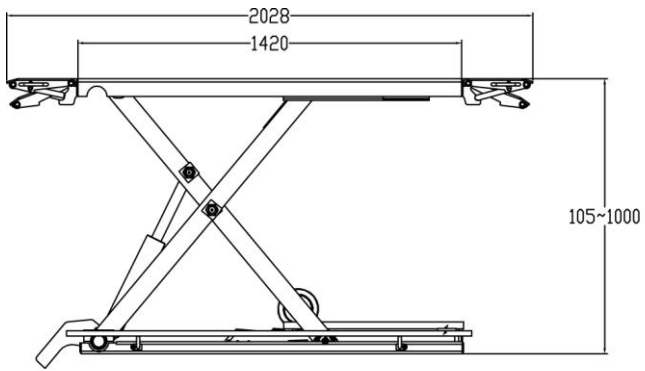
If users strictly follow the above maintenance requirements, the lift will keep in a good working condition.

7. ANNEX

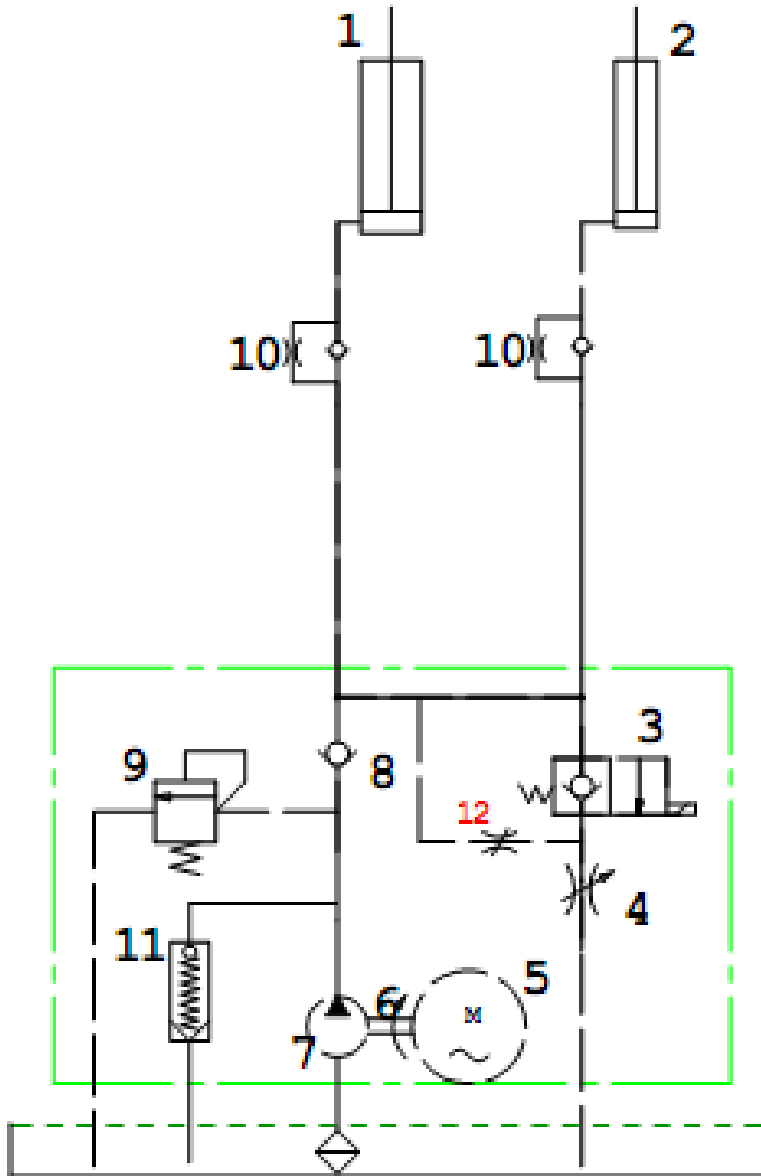
Annex 1 , Packing List

S/N	Name	Drawing #/Spec.	Qty
1	Mechanical Assembly	FL-8803-000	1
2	Mobile kit		Optional
2.1	Wheel	FL-8803-A25-B1	2
2.2	Prop trough	FL-8803-A25-B2	1
2.3	All directional wheel	FL-8803-A25-B3	1
3	Foot protector	FL-8803-A1-B7	2
4	Hydraulic system	FL-8803-A24	1
5	Inside hex screw	M8*12	4

Annex2 , Overall diagram



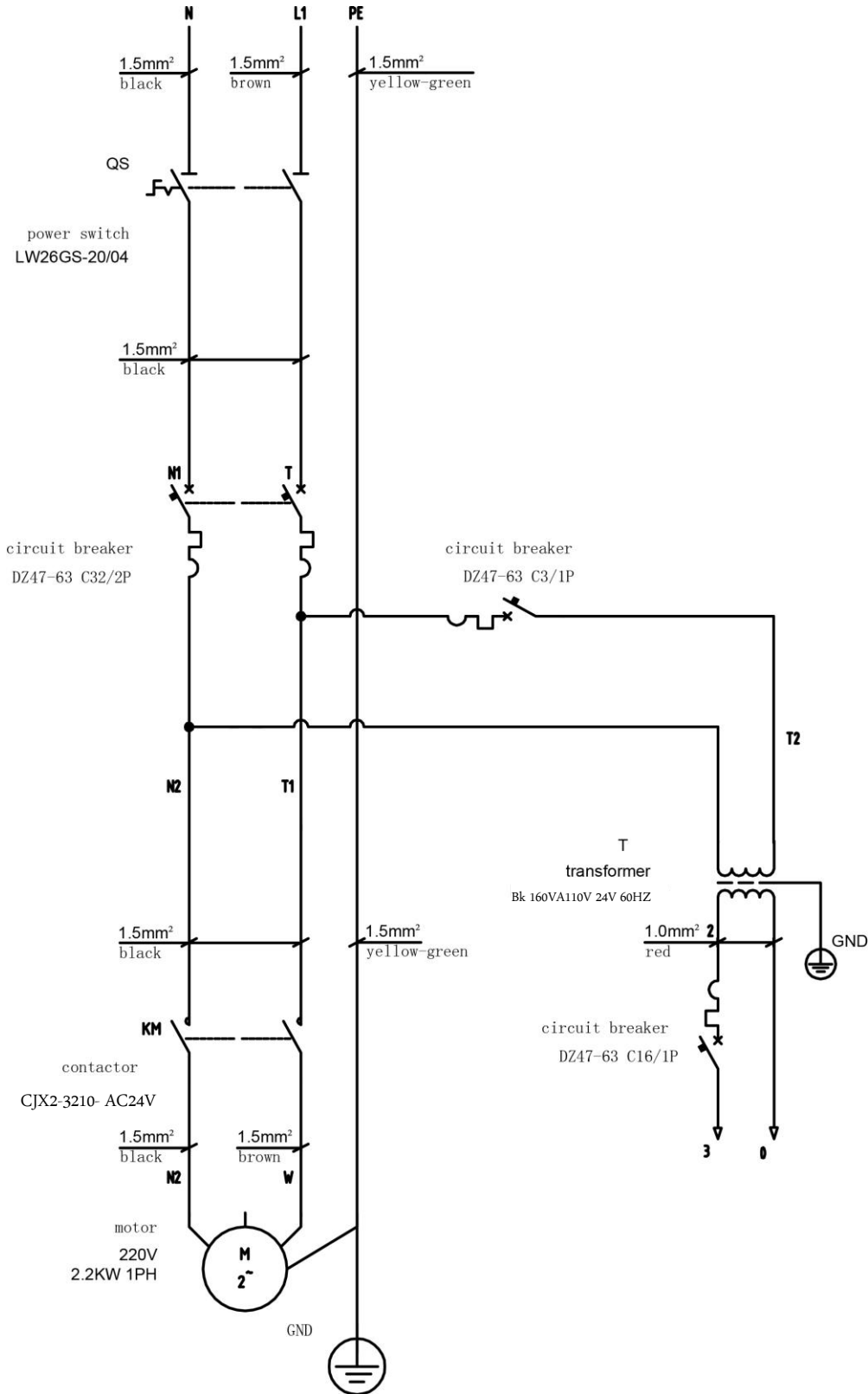
Annex 4 , Hydraulic working system



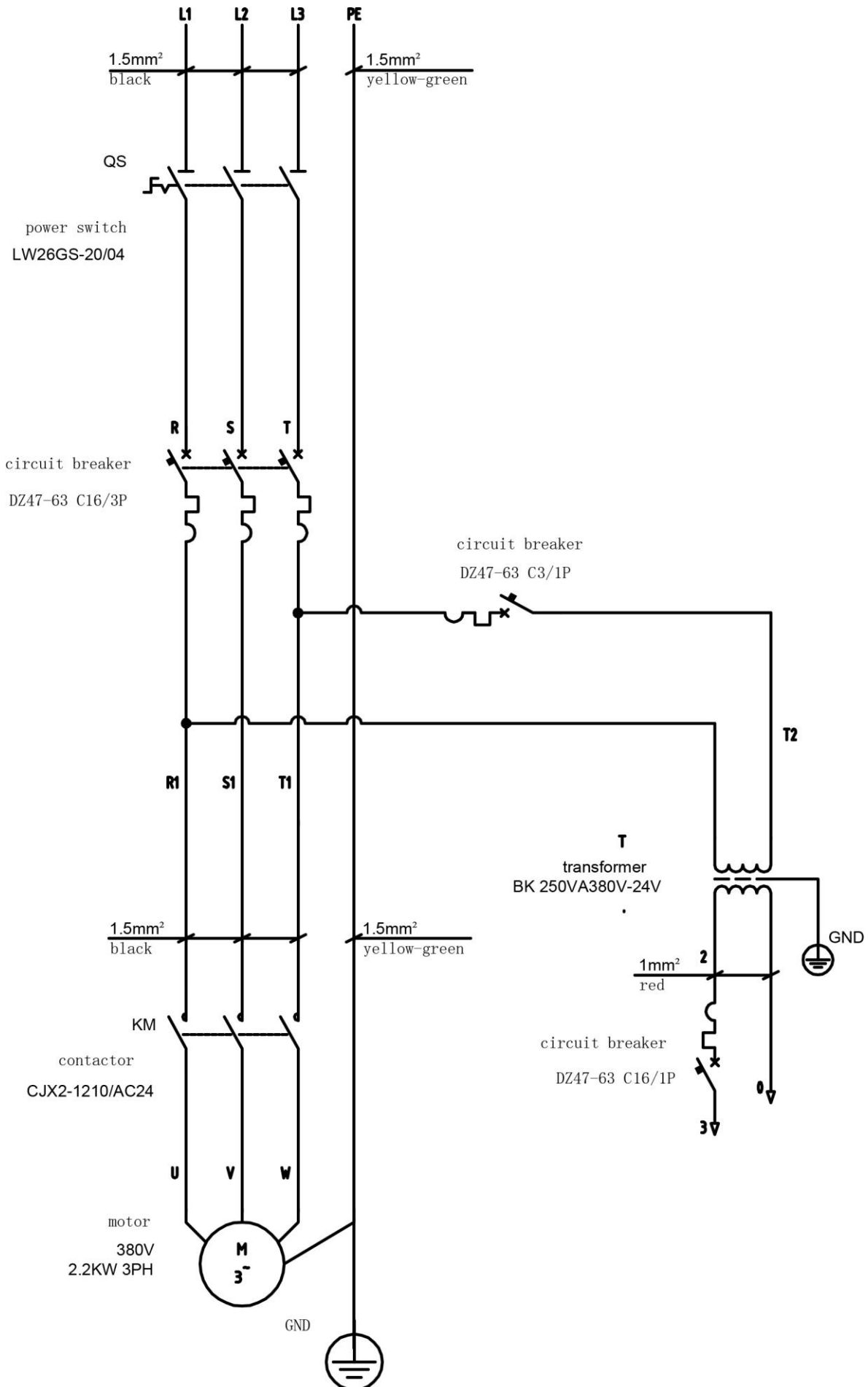
1. Driving cylinder
2. Assistant cylinder
3. Electrical release valve
4. Lowering throttle valve
5. Motor
6. Coupling
7. Gear pump
8. One-way valve
9. Over-overflow valve
10. Anti-surge valve
11. Cushion valve

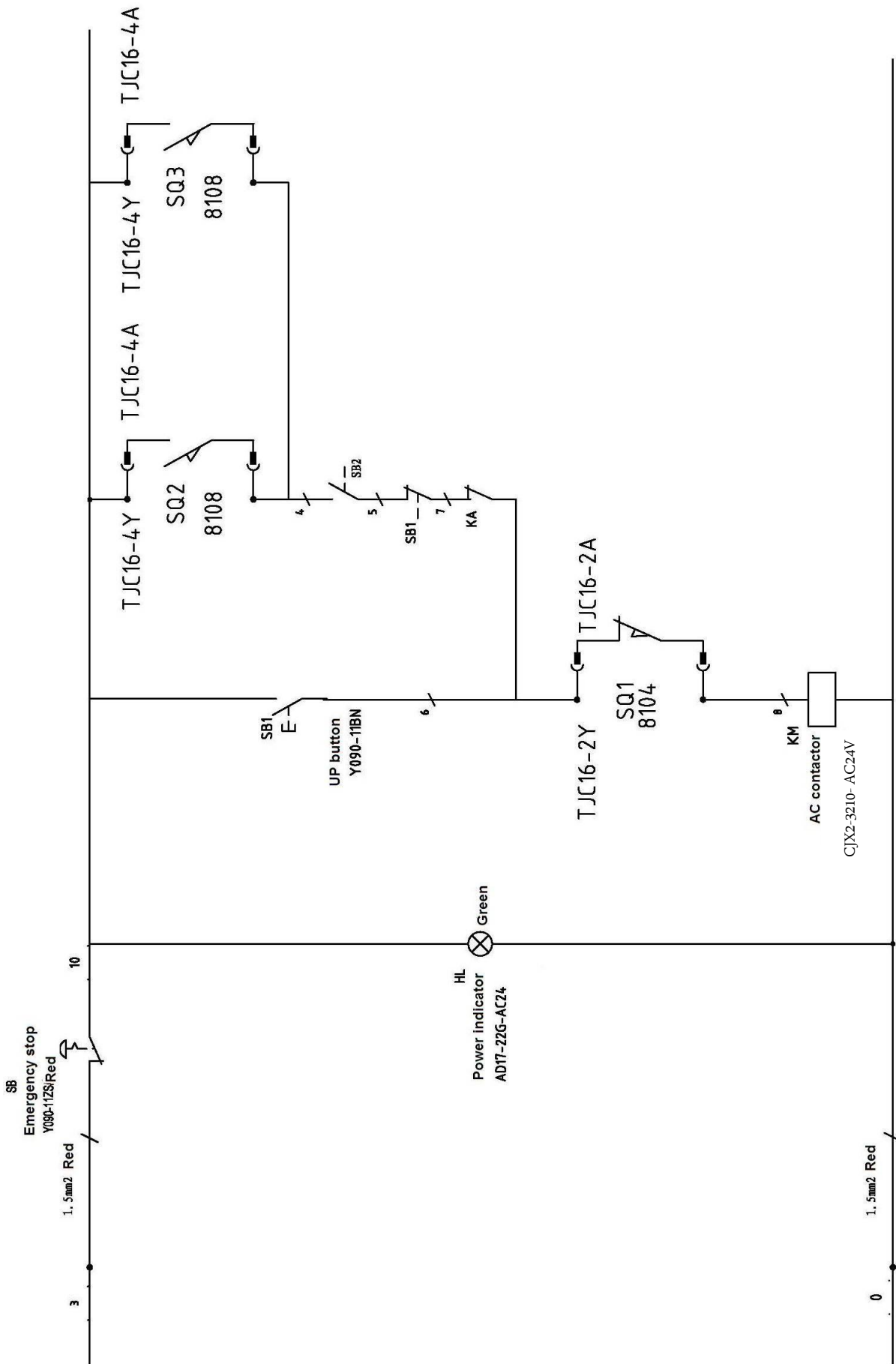
Annex5 , Wiring diagram

Wiring diagram for electrical system with common transformer
Single phase

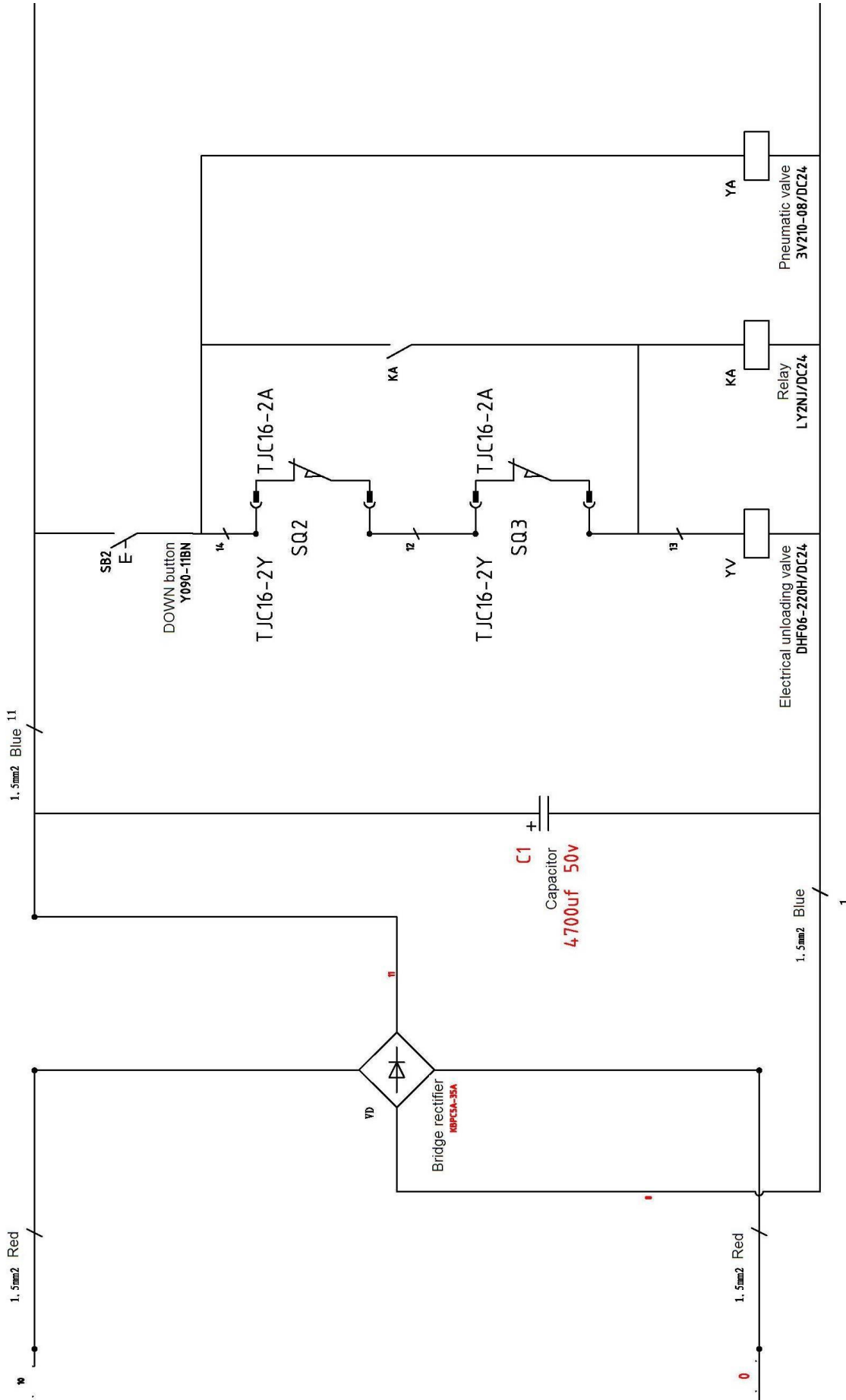


Three phase

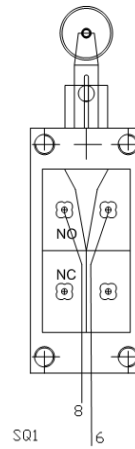
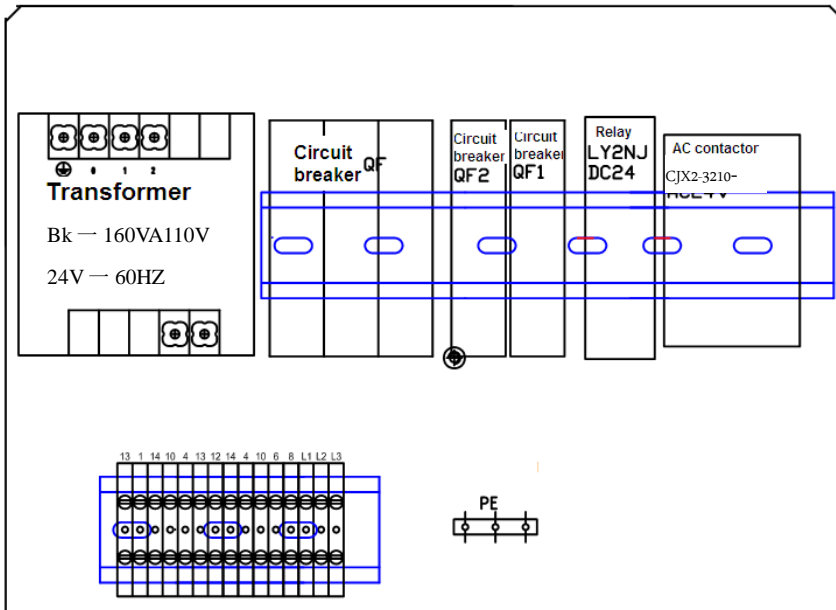




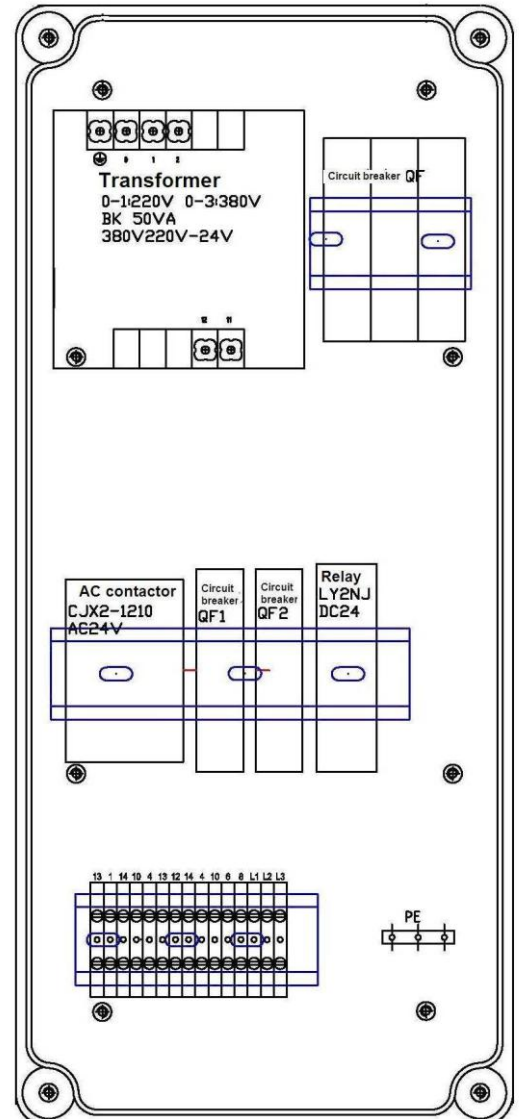
The above wiring diagram is applicable to the version with mechanical safety lock.



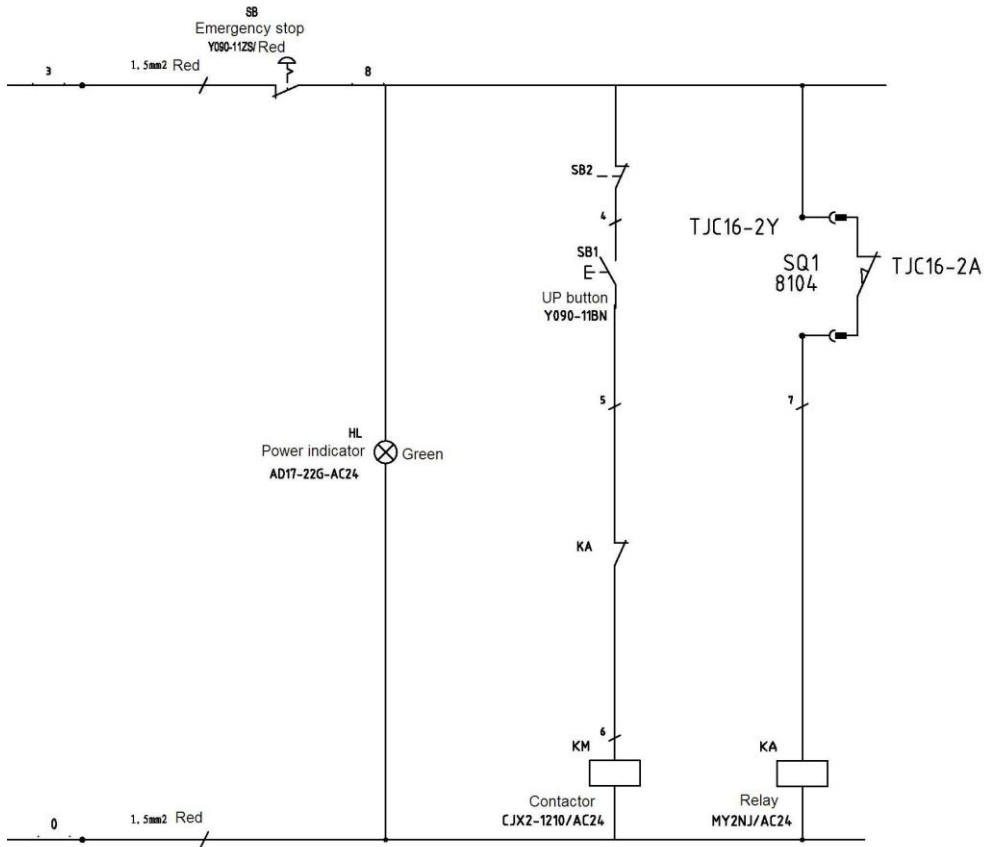
The above wiring diagram is applicable to the version with mechanical safety lock.
Inside layout of control box for version 1

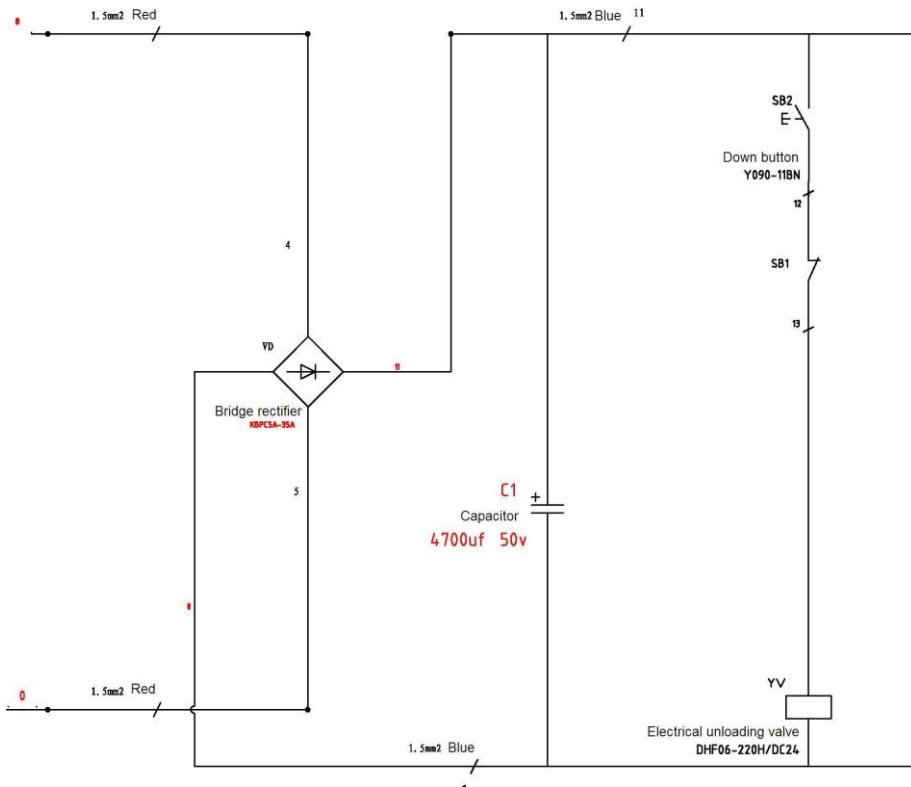


Inside layout of control box for version 2

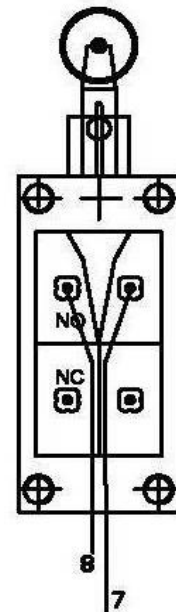
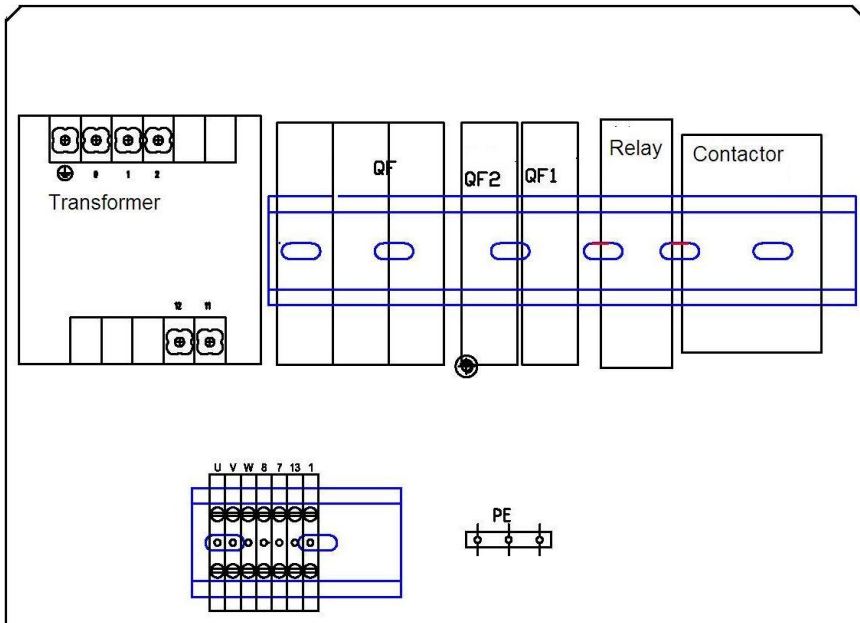


The above wiring diagram is applicable to the version with mechanical safety lock.

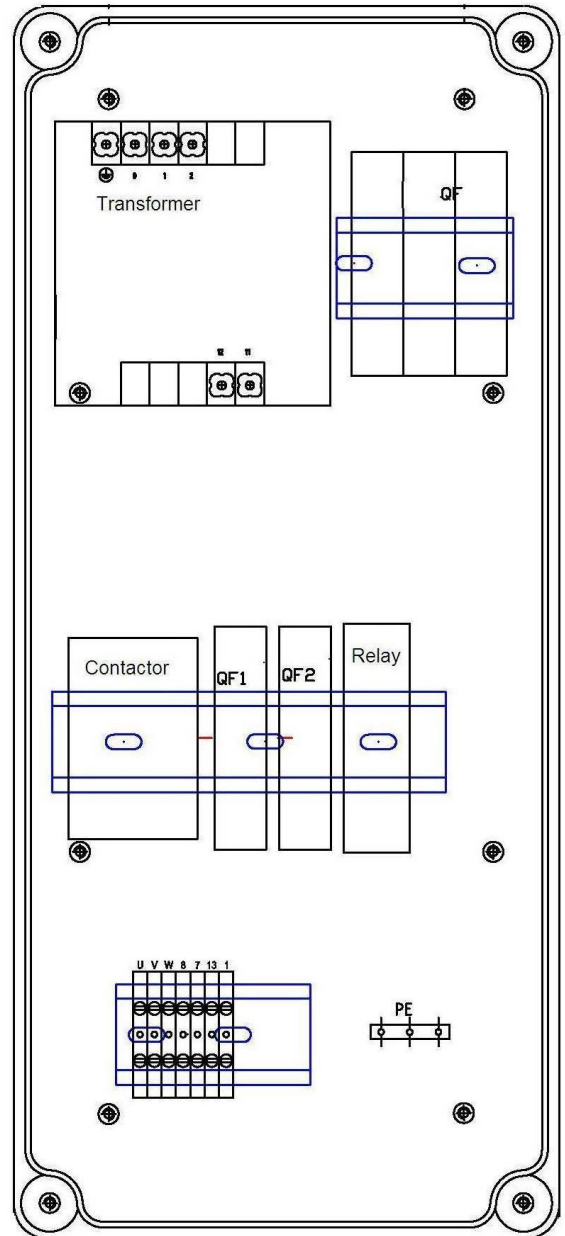




The above wiring diagram is applicable to the version without mechanical safety lock.
Inside layout of control box for version 1 (without mechanical safety lock)



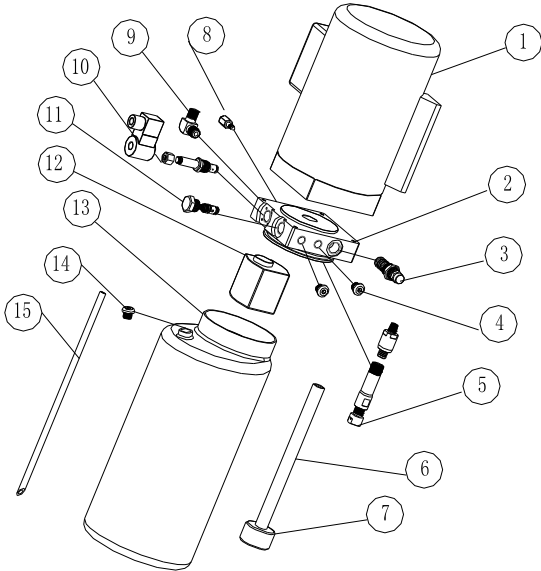
**Inside layout of control box for version 2
(without mechanical safety lock)**



The above wiring diagram is applicable to the version without mechanical safety lock.

Annex 6 , Separate diagrams for the lift

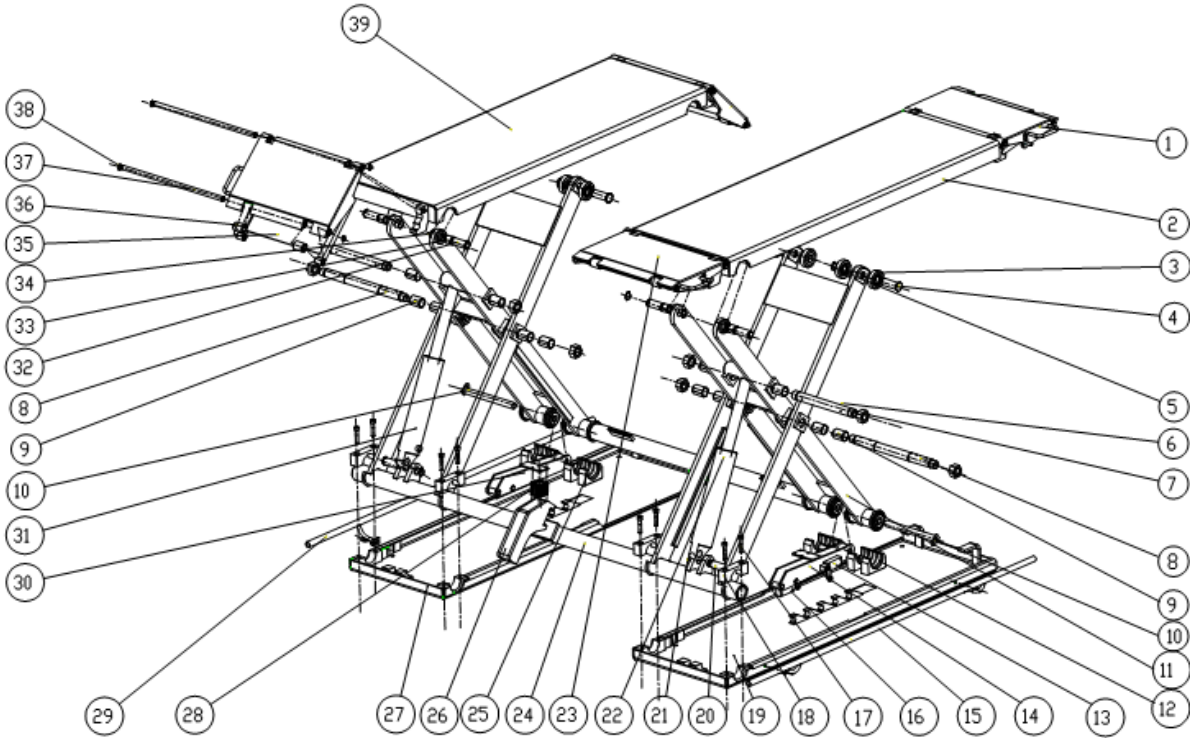
For the pump:



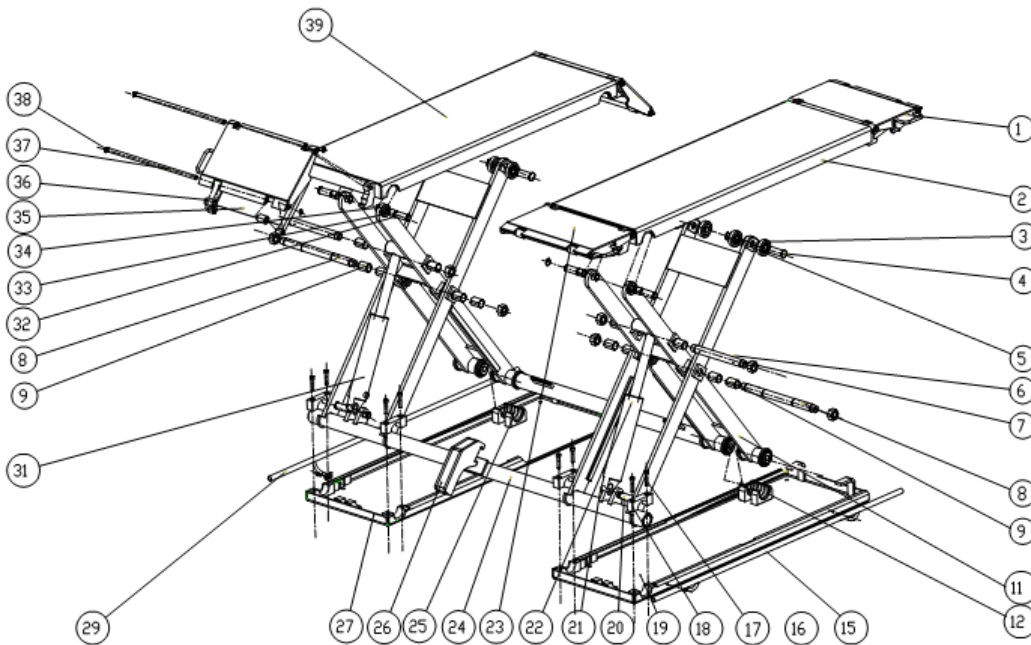
S/N	DESCRIPTION	QTY
1	MOTOR	1
2	HYDRAULIC BLOCK	1
3	OVERFLOW VALVE	1
4	FITTING	2
5	CUSHION VALVE	1
6	ABSORBING OIL PIPE	1
7	OIL FILTER	1
8	THROTTLE VALVE	1
9	OIL HOSE TIE-IN	1
10	ELECTRICAL UNLOADING VALVE	1
11	SINGLE-WAY VALVE	1
12	GEAR PUMP	1
13	OIL TANK	1
14	OIL TANK COVER	1
15	OIL BACK PIPE	1

For the lift

Version with pneumatic safety lock



Version without pneumatic safety lock



S/N	Material No.	Name	Drawing #/Spec.	Qty	Note
1		Ramp assembly A	FL-8803-A22	2	
2		Platform assembly B	FL-8803-A20	1	
3		Small idler wheel	FL-8803-A8	4	
4		Shaft	FL-8803-A9	2	
5		Circlip for the shaft	D25	4	
6		Swing shaft	FL-8803-A17	2	
7		Self-lock screw	FL-8803-A18/ M27	8	
8		X shape shaft	FL-8803-A7	2	
9		Oilless bearing	3045	12	
10		Security shaft	FL-8803-A5-B14	2	
11		Driving assembly	FL-8803-A5	2	
12		Nylon Slider	FL-8803-A5-B6	2	
14		Safety lock holder	FL-8803E-A5-B15	1	
15		Feet protector	FL-8803-A1-B7	2	
16		Limit switch	ME-8104	1	
17		Inside hex screw	M10x50	8	
18		U-shape block	FL-8803-A4	8	
19		Right base assembly	FL-8803E-A2	1	
20		Fasten shaft for oil tank	FL-8803-A16	2	
21		Elastic flange	D25	4	
22		Oil cylinder(right)	FL-8803-A15-B2	1	
23		Guiding plate B	FL-8803-A23	2	
24		Drive assembly	FL-8803-A3	1	
25		Nylon slider	FL-8803-A5-B6	2	
26		Prop-trough	FL-8803-A25-B2	1	
27		Left base assembly	FL-8803E-A1	1	
28		Electromagnet	MQZ2-20N-20	2	
29		Foot protector	FL-8803-A1-B7	1	
30		Safety lock holder	FL-8803-A5-B15	1	
31		Oil cylinder (left)	FL-8803-A15-B1	1	
32		Shaft to fasten platforms	FL-8803-A21	4	
33		Oilless bearing	2525	4	
34		Circlip for the shaft	D25	8	
35		Prop assembly	FL-8803-A22-B6	4	
36		Small idler wheel	FL-8803-A22-B5	8	
37		Shaft of guiding plate	FL-8803-A22-B4	8	
38		Elastic flange	D15	16	
39		Platform assembly A	FL-8803-A19	1	

Annex 7.Spare parts list
Spare parts list---electrical system

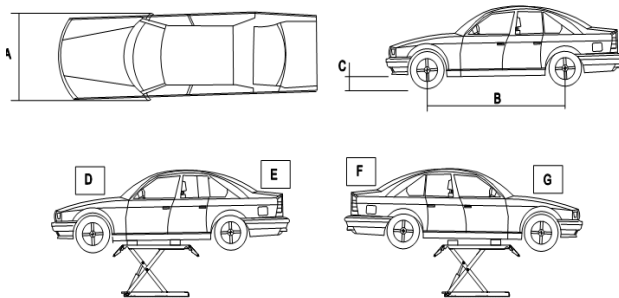
S/N	Material No.	Name	Spec.	Qty	Unit	Pic.
1		Power switch	LW26GS-20/04	1	Pcs	
2		Button	Y090-11BN	1	Pcs	
3		Power indicator	AD17-22G-AC24	1	Pcs	
4		Transformer	BK-250VA380V-24V BK-250VA110V-24V	1	Pcs	
5		AC contactor	CJX2-3210- AC24V	1	Pcs	
6		Circuit breaker	DZ47-63 C16/3P DZ47-63 C32/2P	1	Pcs	
7		Circuit breaker	DZ47-63 C16/1P	1	Pcs	
8		Circuit breaker	DZ47-63 C3 /1P	1	Pcs	

S/N	Material No.	Name	Spec.	Qty	Unit	Pic.
9		Limit switch	YBLX-ME8104	1	Pcs	
10		electromagnet	MQZ2-20N-20	2	Pcs	
11		Emergency stop	Y090-11ZS/red	1	Pcs	
12		Bridge rectifier	KBPC5A-35A	1	Pcs	
13		Capacitor	4700UF/50A	1	Pcs	
14		Relay	LY2NJ/DC24	1	Pcs	
15		Relay holder	PTF-08A-E	1	Pcs	
18		Control box	190*430*135	1	Pcs	

Spare parts list---machine part

S/N	Name	Drawing #/Spec.	Qty	Note
1	Self-lock screw	FL-8803-A18/ M27	8	
2	Security shaft	FL-8803-A5-B14	2	
3	Nylon Slider	FL-8803-A5-B6	2	
5	Safety lock holder	FL-8803-A5-B15	1	
6	Feet protector	FL-8803-A1-B7	2	
7	Limit switch	ME-8104	1	
8	U-shape block	FL-8803-A4	8	
9	Oil cylinder (right)	FL-8803-A15-B2	1	
10	Nylon slider	FL-8803-A5-B6	2	
11	electromagnet	MQZ2-20N-20	2	
12	Safety lock holder	FL-8803-A5-B15	1	
13	Oil cylinder (left)	FL-8803-A15-B1	1	

Annex8, Size and weight requirements on vehicles



Model	A (mm)	B (mm)	C (mm)	D (T)	E (T)	F (T)	G (T)
TWS3-10E	1600	1800	110	1.8	1.2	1.8	1.2

Note: Offers may differ as per different requirements on the version.



Space for notes:



Space for notes:



Space for notes:



Preparation protocol

The lift type with the
serial number: was built on
by the company in
and was checked for safety and function and was put into operation.

The set up and preparation was carried out by the OPERATOR | EXPORT

The safety of the lift was checked by an .

The operator confirms the installation of the lift, and qualified experts have confirmed proper
install before launching unit.

Date Owner/ Operator Signature

Date Installation expert Signature

Address Owner/ Operator:

Address Installation expert:



Safety review pursuant to UVV type

Safety inspection before commissioning/ regular checks/ extraordinary
(Mark off those that do not apply)

Inspection	Good shape	defective	Re-inspection	Notes
Warning labels/ signs				
Name plate/ ID				
Limit switch function				
Condition of rubber plates				
Function of carrier arm locks				
Supporting structure (cracks etc.)				
Function of safety latches				
All screws tight				
Condition of steel cables				
Condition of covers				
Condition of chain				
Condition of cable pulleys				
Condition of hydraulic lines				
Fluid level of hydraulic unit				
Hydraulic system seals				
Condition of the piston rod				
Condition of electronics				
Function test of the lift				
Foundation condition (cracks)				
Lift Slides/guides in the lift column				
Other				
(Check the appropriate box, if re-inspection is necessary mark that box as well!)				

Inspector (Name, Address):

Inspected on:

Inspection result:

- Commissioning/ use possible. Resolve issues by
- Commissioning/ use prohibited. Re-inspection necessary.
- No defects. Commissioning/ use possible.

Signature owner/ operator:

Signature inspector:



Inspection findings

Regular/ extraordinary inspection

On the date of this lift was put through a regular/
extraordinary and thorough inspection. During this inspection these issues were/ were not
found.

.....
.....

Scope of the audit:

.....

Outstanding partial inspection:

.....

The use of this equipment is authorized and the machine and all features have been
inspected .

Location/ Date	Inspectors signature
----------------	----------------------

Operator or agent

Taken notes of the defects

Defect corrected
Date Signature

Verification

Date Signature

On the date of this lift was put through re-inspection. During
this inspection these issues were/ were not found.

The use of this equipment is authorized and the machine and all features have been
inspected.

Location/ Date	Inspectors signature
----------------	----------------------



Safety review pursuant to UVV type

Safety inspection before commissioning/ regular checks/ extraordinary
(Mark off those that do not apply)

Inspection	Good shape	defective	Re-inspection	Notes
Warning labels/ signs				
Name plate/ ID				
Limit switch function				
Condition of rubber plates				
Function of carrier arm locks				
Supporting structure (cracks etc.)				
Function of safety latches				
All screws tight				
Condition of steel cables				
Condition of covers				
Condition of chain				
Condition of cable pulleys				
Condition of hydraulic lines				
Fluid level of hydraulic unit				
Hydraulic system seals				
Condition of the piston rod				
Condition of electronics				
Function test of the lift				
Foundation condition (cracks)				
Lift Slides/guides in the lift column				
Other				
(Check the appropriate box, if re-inspection is necessary mark that box as well!)				

Inspector (Name, Address):

Inspected on:

Inspection result:

- Commissioning/ use possible. Resolve issues by
- Commissioning/ use prohibited. Re-inspection necessary.
- No defects. Commissioning/ use possible.

Signature owner/ operator:

Signature inspector:



Inspection findings

Regular/ extraordinary inspection

On the date of this lift was put through a regular/ extraordinary and thorough inspection. During this inspection these issues were/ were not found.

.....

.....

Scope of the audit:

.....

.....

Outstanding partial inspection:

.....

.....

The use of this equipment is authorized and the machine and all features have been inspected .

Location/ Date Inspectors signature

Operator or agent

Taken notes of the defects

Defect corrected
Date Signature

Verification Date Signature

On the date of this lift was put through re-inspection. During this inspection these issues were/ were not found.

The use of this equipment is authorized and the machine and all features have been inspected.

Location/ Date Inspectors signature



The company

Twin Busch GmbH | Amperestr. 1 | D-64625 Bensheim

declares hereby, that the **scissor vehicle lift**

TW S3-10 (MR-30) | 3000 kg

serial no.

in the configuration placed on the market by us, meets the relevant safety and health requirements, as required by the following EC directive(s) in it's/their current version(s).

EG-directive(s)

2006/42/EC machines

Applied harmonized standards and regulations

EN 1493:2010, EN 60204-1/A1:2009

CE Certificate

M6A 14 08 87411 009

date of issue:

02.09.2014

N8M 14 08 87411 010

place of issue:

München

technical file no.:

646821 401201

Certification body

TÜV SÜD Product Service GmbH,
Ridlerstraße 65
80339 München, Germany
Notified Body Appointment No. 0123

Any alteration to the equipment, improper use or installation void this declaration.

Authorized person to compile technical documentation is: Michael Glade (adress as below)



TWIN BUSCH GmbH

Amperestr. 1 · 64625 Bensheim
Tel. 08251 / 70585-0 · Fax: 70585-28

Authorized signatory: Michael Glade

Bensheim, 21.11.14 Qualitätsmanagement

Twin Busch GmbH | Amperestr. 1 | D-64625 Bensheim

twinbusch.de | E-Mail: info@twinbusch.de | Tel.: +49 (0)6251-70585-0

Look at our videos!
The perfect addition to the manual.

Just scan Qr-Code or copy this link:



Instruction video

<http://www.youtube.com/watch?v=A0XPtgVPcHE>



Twin Busch...
*...jetzt auch
als **App!***



Official Youtube Channel
Twin Busch Germany





Twin Busch GmbH | Amperestraße 1 | D-64625 Bensheim
Tel.: +49 (0) 6251-70585-0 | Fax: +49 (0) 6251-70585-29 | info@twinbusch.de